



sources

COMMUNITY RESOURCE CENTRES

ANNUAL REPORT

APRIL 1, 2016 — MARCH 31, 2017



neighbours helping neighbours

“social
wellness
for our community”

We're in a Neighbourhood Near You



PEACE ARCH RESOURCE CENTRE WHITE ROCK

882 Maple St.
White Rock, BC
V4B 4M2
T: 604 531 6226
F: 604 531 2316

WOMEN'S PLACE RESOURCE CENTRE WHITE ROCK | SURREY

15318 – 20th Ave.
Surrey, BC
V4A 2A2
T: 604 536 9611
F: 604 536 6362

PRINCE GEORGE RESOURCE CENTRE NORTHERN BC

1596 3rd Ave.
Prince George, BC
V4L 3G4
T: 250 561 1194
F: 250 561 1195

NEWTON RESOURCE CENTRE SURREY

102-13771 – 72A Ave.
Surrey, BC
V3W 9C6
T: 604 596 2311
F: 604 596 2319

LADNER RESOURCE CENTRE DELTA

4807 Georgia St.
Delta, BC
V4K 2T1
T: 604 946 0401
F: 604 946 8429

FOOD BANK RESOURCE CENTRE WHITE ROCK | SOUTH SURREY

2343 – 156 St.
South Surrey, BC
V4A 4V5
T: 604 531 8168
F: 604 541 8188

FOOD BANK RESOURCE CENTRE LANGLEY

United Church
5673 – 200th St.
Langley, BC
V3A 1M7
T: 604 531 8168

EMPLOYMENT SERVICES CENTRE WHITE ROCK | SOUTH SURREY

208 - 1461 Johnston Rd.
White Rock, BC
V4B 3Z4
T: 604 542 7590
F: 604 531 6740

EMPLOYMENT SERVICES CENTRE CLOVERDALE

101-5783 – 176A St.
Cloverdale, BC
V3S 6S6
T: 604 576 3118
F: 604 576 3119



Café & Catering
14601 20 Ave.
Surrey, BC
V4A 8P7
T: 604 541 4823

For more information on Sources Community Resource Centres, please visit:

www.sourcesbc.ca



/SOURCESCOMMUNITY
RESOURCECENTRES



/SOURCESBC



/SOURCESCOMMUNITY



/COMPANY/SOURCES



/SOURCESBC

Table of Contents

BOARD OF DIRECTORS	2
MESSAGE FROM THE CEO	3
SOCIAL WELLNESS FAST FACTS	5
CHILD, FAMILY & COUNSELLING SERVICES	6
CORNERSTONE CARE & COMMUNITY SERVICES	
EMPLOYMENT SERVICES	8
COMMUNITY LIVING SERVICES	10
WOMEN, SENIORS & COMMUNITY SERVICES	12
OUR FINANCES	14
IN THE NEWS	16
WON'T YOU BE OUR NEIGHBOUR	17

MISSION

TO PROMOTE SOCIAL WELLNESS FOR OUR COMMUNITY

ABOUT SOURCES

Sources Community Resources Society is an internationally-accredited, community-based, not-for-profit multi-service agency that has served as a dependable source of help, encouragement and hope for individuals and families in White Rock, Surrey, Delta, Langley, Prince George and beyond for almost 40 years.

We touch the lives of close to 40,000 people from across the Lower Mainland and Northern B.C. each year. We offer a variety of social wellness programs through 20 locations, including community resource centres, which are continually expanding to meet individual and community needs.

We strive to create more vibrant and resilient communities by offering support to children, youth, families, persons with disabilities, seniors, and others who are coping with isolation, addiction, poverty, disability and conflict. We also support our communities through leadership, education and volunteerism.



Board of Directors



Bruce Hayne – President

It has been a very busy year for Sources. Of course, this is nothing new to an organization that continues to grow as it serves the needs of more and more communities.

The theme of this year's annual report is "Neighbours." When I think of community, I think of neighbours. Whether we are helping each other,

looking out for one another or simply showing kindness to each other, neighbours make up our communities. With so much turmoil globally, what we do right here at home is important and is a strong indication of the values we hold for our communities.

One significant event that comes to mind is the fire at Ocean Ridge in May of last year. When over 100 residents were forced to evacuate their homes, Sources and countless local neighbours stepped up to help. Some donated cash and food while others offered free services such as counselling. Some lent vehicles and even a place to stay and we have seen this generosity play out across the province this summer as wildfires displaced thousands from their homes.

Sources continues to play a leadership role as a respected and trusted social services agency in our province.

The Society's program services are growing year over year, allowing the organization to invest in other much needed community services such as food banks, rent banks and other community-based services. Sources is well positioned to support our neighbours where needed. Whether it is a sudden disaster like a fire, or emerging trends of addiction and homelessness, Sources has a role to play.

I would like to take a moment and thank the dedicated staff at Sources and the hundreds of volunteers who make this an amazing Society in our community. I would also like to thank my fellow board members for their work and dedication to help make this the best organization it can be. I am very privileged to be able to work along-side such a dedicated group.

The year ahead will be full of challenges. With the volunteers, staff and management we are blessed to have, we will meet these challenges head on as we continue to provide the services and programs our communities need.



Gary Hollick –
Past President



Marlyn Graziano –
Vice President



Bryan Sommer – Treasurer



Marc Burchell



Catherine Ferguson



Leigh Sully



Sara Forte



Randy Taylor

Message from the CEO



David Young – CEO

WON'T YOU BE MY NEIGHBOUR

Whenever I reflect about neighbours and neighbourhoods I can't help but bring forth the image of Mr. Rogers. At the beginning of each show he would sit on his chair and slowly change into his cardigan and sneakers while singing gently the song, "Won't You Be My Neighbour." A number of years ago while conversing with friends about Mr. Rogers, we laughed and poked fun at what we thought was a rather corny and simple approach to children's

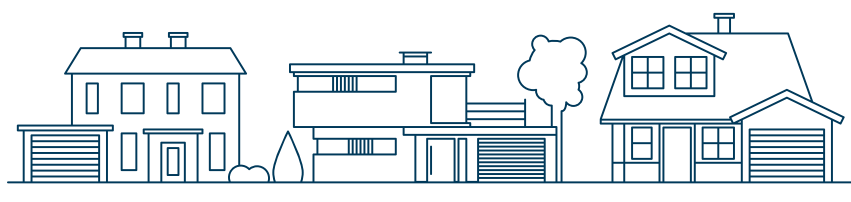
entertainment. The laughter stopped when one of us spoke up about how, during an abusive and neglected childhood, Mr. Roger's Neighbourhood was the one place of calm and safety where he felt loved and wanted. The show played a critical role in helping him to cope with very difficult circumstances. Fred Rogers always ended each show by reminding him that he could "Make each day special" just by being himself. An important message for a child struggling with his self-esteem.

The theme of this year's Annual Report is Neighbourhoods. Our agency is fortunate to be part of many unique and resilient neighbourhoods. Over the past year, we have witnessed the power and comfort of neighbours reaching out and helping one another. We have been able to play a small role in the efforts of the Friends of the Grove as well as The Plot Sharing Garden to strengthen the Newton neighbourhood. We have been a part of the neighbourhood response to support the victims of the Paddington Station fire in Langley. On the beachfront in White Rock, we worked with the Peninsula Pastors Network, the Red Cross and City staff to meet the challenges faced by our neighbours who had to leave their homes. And once again this year, it was a pleasure to join together with our neighbours to participate in the Coldest Night of the Year Walk – to help make sure our neighbours have a roof over their heads.

One of the greatest joys of the work that I do in community is when I am able to be a part of neighbourhood activities or events designed to improve the place where we live and the lives of the people who live here. I am inspired by the tireless efforts of our local Rotary Clubs and am honoured that SOURCES is a member of the White Rock Club. Their efforts, as well as those of so many volunteers in our community, make a positive difference.

All neighbours reaching out to help their neighbours.

I think Mr. Rogers would be proud.



THIS YEAR SOURCES TOUCHED THE LIVES OF CLOSE TO

40,000

PEOPLE IN NEED

93.7%

AVERAGE CLIENT SATISFACTION

out of 1,229 clients surveyed

WHO WE SERVE



20%
CHILDREN



20%
SENIORS



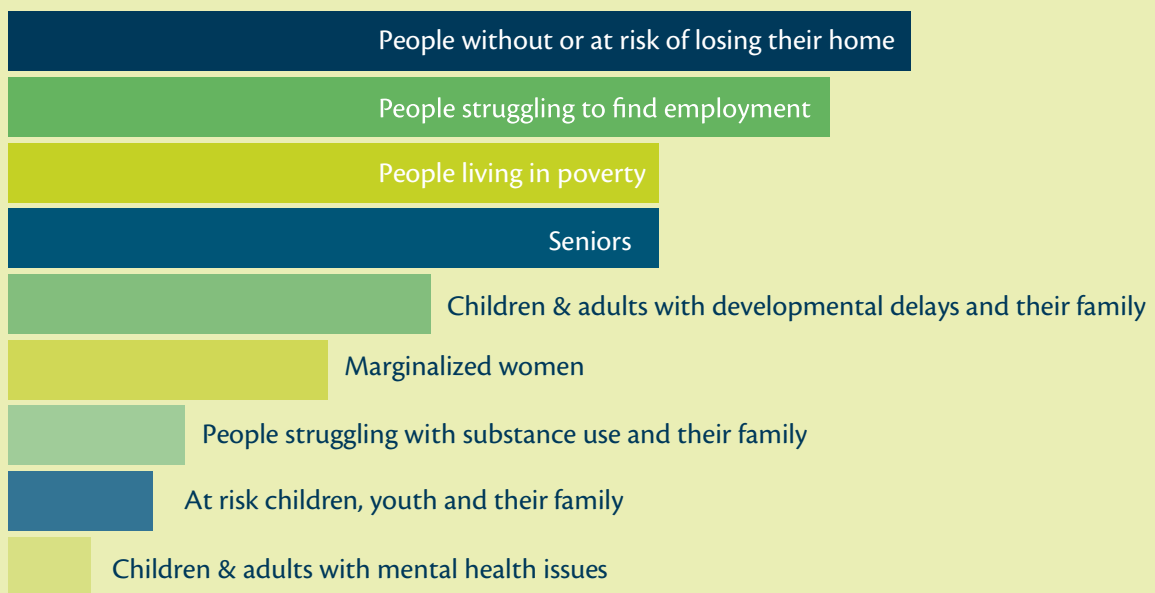
60%
ADULTS

MORE THAN **57%**
ARE WOMEN AND GIRLS

NEARLY **50%**
OF FOOD BANK CLIENTS ARE CHILDREN

WE PROVIDED SUPPORT TO FAMILIES OF **900**
INFANTS (0-3) WITH DEVELOPMENTAL DISABILITIES

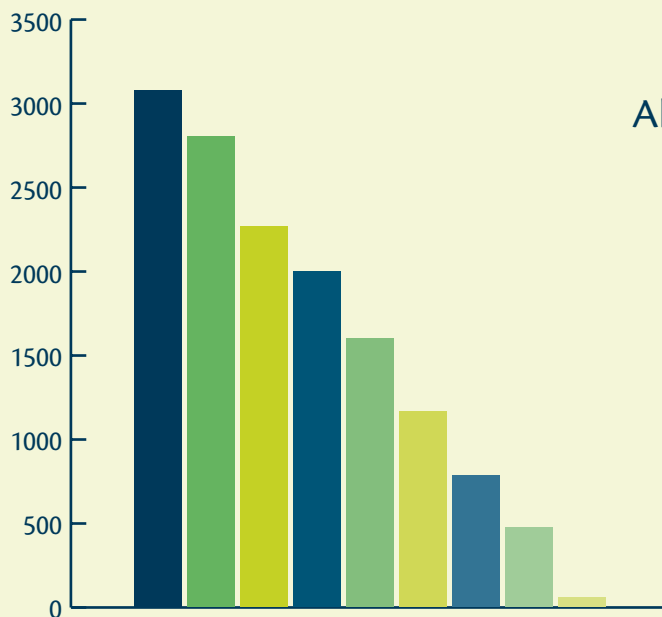
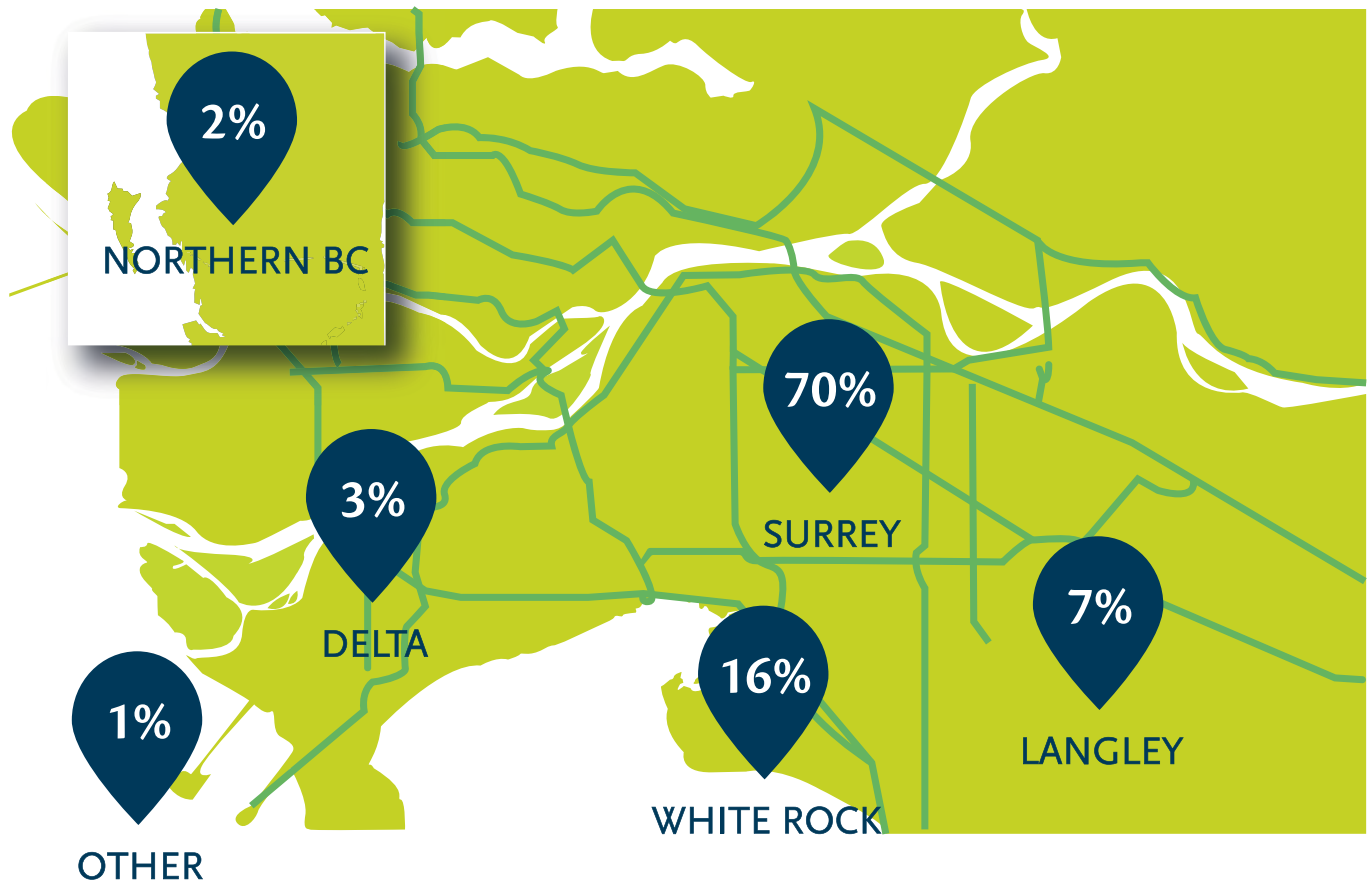
POPULATION CATEGORIES



0 500 1000 1500 2000 2500 3000 3500

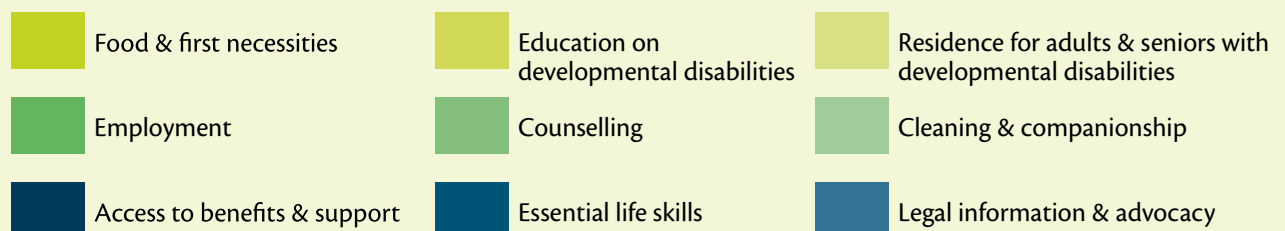
Many of these issues are overlapping and many of our clients face several of these issues at the same time. The above population categories are only an indication.

WHERE OUR CLIENTS COME FROM



TYPES OF SUPPORT

All our programs take an individualized and holistic approach to supporting clients. We assess each client's needs and offer referrals so that they can access all the support they need.



Child, Family & Counselling Services

WHAT CLIENTS SAY

“My daughter attended your Incredible Me class last fall. The class was truly life changing for her. It was comfortable and the coping exercises were excellent.”

– FAMILY SERVICES

“Team members are absolutely amazing. The progress and growth we have with our child is great and we will continue to use and recommend Sources.”

– ACCESS PROGRAM

“I always feel welcomed and cared about. I feel better about myself and what I can accomplish through the help of my counsellors.”

– SUBSTANCE USE SERVICES

“Thank you for opening me up to the community, resources, and healthy alternatives and activities when I’m feeling down.”

– CHILD & YOUTH MENTAL HEALTH PROGRAM



DIRECTOR'S MESSAGE

Last year was a busy one in the division of Child, Family, and Counselling Services. Our new Family services in Prince George are fully staffed, and in the spring we added another family worker in Dawson Creek. We hired a new temporary manager for Family Services, Judith Desjarlais, who has greatly assisted in making connections with local indigenous communities. Our B.A.S.I.C. services to children with Autism and developmental disabilities now serve 39 clients compared to 14 last year! The demand for service is so great that we may need to find a new location and we are planning services in communities outside of Prince George. Last fall, we held an open house that was attended by the mayor and many others in the social services community.

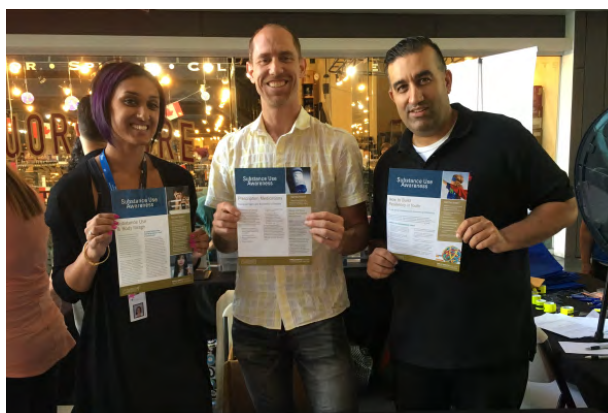
Sources has responded to the public health emergency posed by opioids by partnering with the Surrey School District, Fraser Health and other service providers to provide awareness of overdose prevention and response. Some staff have also been trained to identify and respond to possible overdose situations and potentially administer life-saving Naloxone. There are plans to train more staff. Our Maple St. location in White Rock also provides Naloxone kits to end users.

Sticking with our neighbourhood approach to substance use initiatives, we have provided school presentations, developed a peer led mentorship program, offered groups for parents of substance active youth, and facilitated a training day with the Surrey School District to develop a more efficient response continuum for students.

Sources youth staff and programs have been involved in supporting the development of a neighbourhood Youth Space in South Surrey/White Rock, which had its grand opening in May 2017.

We welcome new managers to our programs. Casey Derbyshire is the manager of B.A.S.I.C. and Aaron Sikhosana is our new manager of Family Services. Temporarily, Heather Sinclair is managing our Positive Behaviour Support Services in the Lower Mainland while our permanent manager Peggy Yu is on leave.





Some Groups Offered This Year

TURNING POINT: PARENTING GROUP FOR PARENTS OF SUBSTANCE ACTIVE YOUTH

A safe, confidential space for caregivers to come together to share, explore and learn about: understanding substance use, adolescent development, communication, boundaries, crisis management, resilience, self-care, youth/adult connection.

TUNED IN PARENTS: YOUTH OFFERING THEIR VOICES

A rare opportunity for parents to hear from a group of students about what it is like to be a youth in 2017. Learn from a small group of students from neighbouring schools as they discuss their thoughts and experiences regarding pressures, stress, social media, substance use and the supports they prefer from their parents.

Cornerstone Care & Community Services

WHAT CLIENTS SAY

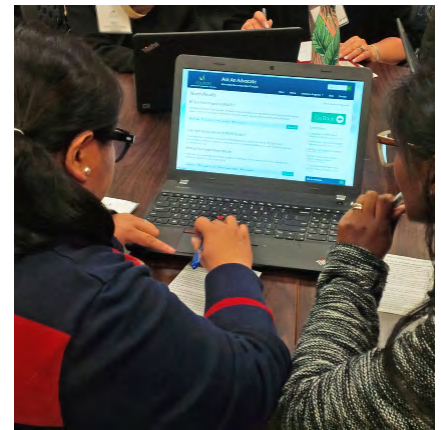
"I appreciate the enormous help I have received. [Staff] was clear, concise, friendly, awesome."

– ADVOCACY, HOUSING & PREVENTION SERVICES

9.2/10 satisfaction rating indicated by clients

95% were satisfied with the support they received from staff

92% indicated improved well-being from having housing stability as a result of services received



Employment Services

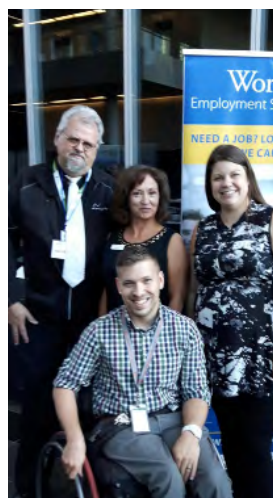
WHAT CLIENTS SAY

"No other to say thank you from beginning to end. My initial Case Manager, my course teacher and my final Case Manager! I cannot thank you enough."

– WHITE ROCK EMPLOYMENT SERVICES CENTRE

"I went from being overwhelmed to feeling empowered!"

– CLOVERDALE EMPLOYMENT SERVICES CENTRE



DIRECTOR'S MESSAGE

I am pleased to report on another year of expanded services and unwavering support for our community services.

With our newest program – Cornerstone Care – we welcome more than fifty caring and professional staff dedicated to supporting seniors and others to remain safe, comfortable, and independent. We are very excited to have these new services available.

We also launched AskAnAdvocate.ca. This website allows us to reach more people with needs related to income supports, benefits, and tenancy as well as offers information for family, friends, and other service providers who are advocating for their friends and neighbours.

Coldest Night of the Year raised more than \$100,000 this year – exceeding our target by more than 40 percent! Proceeds of this annual fundraiser support our Homelessness Prevention Services which continue to experience increasing demands.

The housing market has continued to impact affordable rental stock and has made our housing and homelessness prevention efforts increasingly challenging. We, however,



have seen a number of heartwarming examples of neighbour-helping-neighbour.

A senior who has lived in his apartment for almost ten years found himself only a few days away from homelessness. Unable to get around on his scooter during the snowy winter, he used rent money to pay for taxis. With a loan from our Rent Bank, and some coaxing from our advocate, the landlord withdrew the eviction notice – choosing to support his neighbor rather than raise the rent.

I would like to acknowledge this landlord, our other kind-hearted community members, and our valued Sources staff for their collective – and very neighbourly – efforts.

DIRECTOR'S MESSAGE

Employment Programs had another successful year and I thank the teams of Employment Services Centres whose dedication, commitment and hard work makes it all possible. The Centres provided exceptional services to the residents of Cloverdale, South Surrey and White Rock, supporting them with a wide range of services that include long-term skills training, apprenticeship, self-employment and many others.

This year, we specifically connected with neighbourhood youth through schools and held Interview sessions at the libraries so that our future leaders are well prepared to step into adulthood and the world of work. They practiced their interview skills with real employers such as Starbucks, Panago Pizza, Superstore and London Drugs, and received helpful tips from them.

True to the nature of our work, we connected with No Frills when they opened their store in Cloverdale to help them recruit and fill positions. Our goal is to help, not only the job seekers, but also the employers in the neighbourhood.



On another positive note, the Ministry extended the contracts for both our Centres by two more years. This extension gives us the opportunity to continue our work with all clients including Single Parents and multi-barriered clients. The Centres support many single parents with tuition, transportation and daycare so that they are able to finish school or go to work, leave social assistance and be self-sufficient.

Our goal remains to support our clients with their employment needs and we plan to achieve this goal through our strength – the staff – and seek their continuous involvement in achieving our objectives.

Community Living Services

WHAT CLIENTS SAY

“We feel like we’re part of a bigger family! Inclusiveness is very evident.”

– HOME SHARE PROGRAM

“Our consultant has been amazing every time she visits. From the way she interacts with my child to the way she interacts with us and conducts herself – she has been very compassionate and understanding and patient. She always provides us with constructive feedback on how to work on things that my child needs improvement in. We really appreciate the services provided by the Infant Development Program. It has really helped us recognize and achieve all of my child’s milestones in a timely manner. Thank you so much for all you do for kids that need that extra help.”

– INFANT DEVELOPMENT PROGRAM



DIRECTOR’S MESSAGE

Engaging in our community is an essential piece of the work we do within community living. Our Early Childhood Development services, residential programs and community inclusion programs rely upon the support of their surrounding neighbourhoods in Surrey, White Rock and Delta.

For individuals and families, living with a developmental disability can feel isolating and navigating resources can be daunting. Sources’ Infant Development Consultants reach out to the community to help families learn about the development of their child and connect them with resources in their neighbourhood. Beyond their daily work of home visiting, our consultants visit partner locations such as DiverseCity, Alexandra Neighbourhood House, Public Health and Family Resource Centres to connect with families who have question about their child’s development. Data shows we reach thousands of people annually via outreach, most of whom would not know about the service otherwise.

Sources’ services for adults with developmental disabilities and autism are fully integrated in to their neighbourhoods. Our homes and community inclusion programs are nestled in neighbourhoods like any other family home. In Ladner, White Rock, Newton and Cloverdale, many of our service recipients are known and embraced by community members – neighbours, store clerks and bus drivers are often on a first name basis with our folks.

Everyone benefits from the safety net a good neighbour provides but it may be a little more important to those living with a disability. We cannot thank our communities enough for supporting our work and making life a little easier for those we serve.





meet our neighbours!



Women, Seniors & Community Services

WHAT CLIENTS SAY

“A safe place where you can get nutrition through meals and life skills and connect with others. It’s hard to put into words how much this place means to me.”

– WOMEN’S PLACE

“I’ve really started to regain a sense of self. I needed compassion, understanding and kindness to begin my journey to wellness.”

– TRAUMA COUNSELLING PROGRAM

“It is an excellent program for seniors or anyone who can’t get out on their own. I have been using it since 2011 and recommend it all the time.”

– SHOP BY PHONE PROGRAM

“Because I was a single parent raising three children, I relied on social assistance and the kindness of others; I have empathy and feel the need to give back.”

– VOLUNTEER SERVICES



DIRECTOR’S MESSAGE

Our programs are built upon a practice of helping our neighbours.

This past fiscal year, we played a part in providing support for victims of the Ocean Ridge apartment fire in White Rock and the Paddington Station fire in Langley. Evacuees were given access to our trauma counsellors, food banks, meals, clothing and more. One of the fire victims started coming to Sources Women’s Place for support and now volunteers with us to help her neighbours.

In Langley, we expanded support for the local school district’s breakfast program as well as their Weekend Fuelbag Program and Ishtar Transition Housing.

We opened the Embrace Clinic at our White Rock/South Surrey Food Bank, to offer confidential Forensic Nursing Services for abused and assaulted women. In addition we address other health concerns for clients referred by other Sources programs.

Our popular “Community Connections” Food Truck provided healthy food at the Semiahmoo Seniors’ Planning Table workshops and participated in several White Rock and Surrey-sponsored community events.

Volunteer Services engaged 348 volunteers, who gave 36,208 hours of their time.

The Hospital-to-Home Program expanded to take more Peace Arch Hospital patients safely home, ensuring they are safe, with pantries stocked.

We also organized our first Giving Tuesday campaign to raise funds for our Volunteer Wheels Program, assisting our neighbours to get to medical appointments.





neighbours helping neighbours



One major project this year was the Rotary Save-On-Foods Gift Card Program, a “no-cost charity” that raises funds to purchase food for our White Rock/South Surrey Food Bank. Over \$68,000 was presented to the food bank this year, thanks to the support of the Block Foundation, five Rotary clubs on the Peninsula, and the many neighbouring merchants and shoppers who sell and use the cards.

Several new groups offered at Women’s Place have helped women in the community to make connections and find support systems.

Legal Services completed the Modified Legal Representation Project and provided 785 women with legal information and advocacy. They also organized a food drive and canvassed supplies for back-to-school, costumes at Halloween and hampers at Christmas so clients could provide the experience for their families.

Our social enterprises continue to do good business. The Connections Café employed seniors and youth and provided catering for the City of Surrey and other corporate partners. Our Concierge team employs women in the community who play an important role ensuring the safety, health and well-being of our senior neighbours.



Our Finances

FUNDING PARTNERS

BC COMMUNITY GAMING GRANTS
BC HOUSING
CITY OF SURREY
CITY OF LANGLEY
CITY OF WHITE ROCK
COMMUNITY LIVING BC
CORPORATION OF DELTA
ELIZABETH FRY SOCIETY
FIRST WEST FOUNDATION
FRASER HEALTH AUTHORITY
LAW FOUNDATION OF BC
MINISTRY OF CHILDREN
AND FAMILY DEVELOPMENT
MINISTRY OF JUSTICE
MINISTRY OF SOCIAL DEVELOPMENT
AND SOCIAL INNOVATION
PEACE ARCH HOSPITAL AND
COMMUNITY HEALTH FOUNDATION
PROVINCE OF BRITISH COLUMBIA
SERVICE CANADA
SURREY HOMELESS TO HOUSING SOCIETY
THE BLOCK CHARITABLE FOUNDATION
UNITED WAY OF THE LOWER MAINLAND
UNIVERSITY OF VICTORIA
VANCITY COMMUNITY FOUNDATION
VANCOUVER FOUNDATION

AND ALL THE VARIOUS DONATIONS AND
GRANTS WE RECEIVED FROM COMMUNITY
INDIVIDUALS, BUSINESSES, SERVICE CLUBS,
CHURCHES AND FOUNDATIONS.
THANK YOU!



CHIEF FINANCIAL OFFICER'S MESSAGE

Sound financial management is the core of good service delivery. The Finance team strives to help our Program Managers and Divisional Directors make informed decisions using clear financial information, giving them confidence in the choices they make, resulting in the most beneficial outcomes.

This year, Sources took over the bookkeeping functions of Cornerstone Care Society, a non-profit entity based in Langley. This was the first step in transitioning Cornerstone fully under the Sources Umbrella administratively. Payroll functions were transitioned to Sources in January 2017 and the remaining accounting and administrative functions were transitioned to Sources prior to April 1, 2017, at which time Cornerstone became a service program operating under the Sources name.

Following an RFP process, Sources has transitioned to new insurance providers (Marsh Canada). A positive outcome has been enhanced coverage limits and additional coverage related to Cyber-attacks.

In January 2017, Sources servers were attacked by the Crypto Virus, a "ransom-ware" virus. Our IT providers (Express Computers) were successful at removing the virus before it was able to halt our systems entirely. After a thorough review, Sources has moved forward with enhancing its backup capability using a Cloud Data Backup Service separate from our existing servers. This is in addition to purchasing Cyber Insurance. We are confident that we are doing all we can with our network security to guard against cyber-attacks.

The Society remains in sound financial health. Through prudent financial management, diversity in funding sources, and a strategic balance between mission impact and financial sustainability, the Society is well positioned moving forward.



Audited Financial Statements

For the year ended March 31st, 2017

CURRENT ASSETS

Cash and cash equivalents	\$1,836,499
Accounts receivable	1,140,022
Prepaid expenses	93,501
Inventory	314
Government agencies receivable	17,992
Total current assets	\$3,088,328

Capital assets	6,772,046
	\$9,860,374

CURRENT LIABILITIES

Accounts payable and accruals	\$966,092
Deferred contributions	575,404
Current portion of long term debt	2,018,631
Total current liabilities	\$3,560,127

Long term debt	58,298
Deferred contributions related to capital assets	520,998
	\$4,139,423

NET ASSETS

Net assets invested in capital assets	\$4,174,117
Unrestricted net assets	1,519,384
Externally restricted net assets	27,450
Total net assets	\$5,720,951

\$9,860,374

REVENUE

Grant revenue	
Sources Foundation	\$6,773
Law Foundation	150,000
United Way	119,725
Other	320,757

Donations	
Sources Foundation	434,555
Other	359,404

Federal contracts	299,518
--------------------------	----------------

Subsidies – B.C. Housing	22,447
---------------------------------	---------------

Gaming income	213,666
----------------------	----------------

Earned income	1,646,271
----------------------	------------------

Provincial contracts	16,343,691
-----------------------------	-------------------

Total revenue	\$19,916,807
----------------------	---------------------

EXPENSES

Amortization	321,853
---------------------	----------------

Building occupancy	397,190
---------------------------	----------------

Employee benefits	2,640,217
--------------------------	------------------

Food and residential care costs	216,976
--	----------------

Interest on long-term debt	59,443
-----------------------------------	---------------

Office	609,740
---------------	----------------

Program furnishings and equipment	178,738
--	----------------

Program materials and activities	2,378,086
---	------------------

Public relations	36,461
-------------------------	---------------

Purchased services	1,822,652
---------------------------	------------------

Recruitment and staff development	121,347
--	----------------

Rent	732,546
-------------	----------------

Salaries	10,069,367
-----------------	-------------------

Travel	305,642
---------------	----------------

Total expenses	\$19,890,258
-----------------------	---------------------

Excess of revenue over expenses before other items	\$26,549
--	-----------------

OTHER ITEMS

Gain (loss) on disposal of capital assets	(1,515)
--	----------------

Excess of revenue over expenses	\$25,034
--	-----------------

In The News



SURREY'S HOMELESS BRACE FOR NASTY WEEKEND WEATHER

CBC NEWS: OCT. 15, 2016

"Sources B.C. helped the pair find housing and for the last seven months they have been living together in a home in Newton."

THE LANGLEYS COME THROUGH FOR SOURCES FOOD BANK

LANGLEY TIMES: SEP. 24, 2016

"The campaign collected 19,000 lbs. of food, more than three times the 6,335 lbs. gathered by the same campaign in 2015."

SOURCES LAUNCHES NEW PROGRAMS

CKPG TV PRINCE GEORGE: SEP. 22, 2016

"The programs are primarily focused in Prince George with some families served as far as Burns Lake and Quesnel. However, it could expand across Northern B.C. as demand is needed."

THANK YOU TO THE READERS OF THE PEACE ARCH NEWS FOR VOTING FOR US IN THE "BEST OF THE PENINSULA 2016 READERS' CHOICE AWARDS!"

WINNER "Best Non-Profit Organization"
FINALIST "Best Senior Services"



NEW PROGRAM HELPS PATIENTS GET HOME SAFE AND SOUND



PEACE ARCH NEWS: MAY 5, 2016

"Launched in January, the program offers assistance to senior hospital patients who are ready to go home but don't have a family member or friend readily available to help them get there. Volunteers – who work in pairs – drive the senior home, making sure they have what they need to settle into their routines."

WHITE ROCK FIRE FUELS COMMUNITY



AM730, CKNW 980, WHITE ROCK SUN, PEACE ARCH NEWS
Hundreds of people from the community came out to the parking lot behind Star of the Sea Community Centre on June 29, 2016 to support the Ocean Ridge fire evacuees, connect with neighbours and thank first responders. There was a barbeque, refreshments, entertainment for kids, live music, speeches and more. Thank you to everyone who stopped by to join us in recognizing and celebrating the positivity that has come out of the tragedy. We are "A Community of Caring."

WANT TO RECEIVE OUR EMAIL NEWSLETTER?

Sign up: <http://tinyurl.com/SubscribeResources>

HAVE A MEDIA INQUIRY OR QUESTION ABOUT OUR NEWSLETTER, WEBSITE OR SOCIAL MEDIA?

Contact Tiffany Kwong, Communications Coordinator:

T: 604 542 7593 E: communications@sourcesbc.ca



Since 1992 the Sources Foundation has supported the work of Sources Community Resources Society by working with the community to raise funds for programs that do not receive government funding, such as our food banks, dental clinic, hot lunch program and more.

You can support our work in the community by making a tax-deductible donation. Every donation has an impact and allows us to address current issues and demands, and have the flexibility to respond to the changing and growing needs in our community.

Our donors have the choice of how their money will help. When donating, you may choose to direct your funds to the area of greatest need or specify Community Support, Families & Children, Poverty Relief or one of our Food Banks.

WANT TO BE A SOURCES VOLUNTEER?

For more information or to sign up,
Contact Carrie Belanger, Manager of Volunteer Resources
T: 604 542 4357 E: volunteerservices@sourcesbc.ca

WANT TO ATTEND OUR FUNDRAISERS?

Coldest Night of the Year: February 24, 2018
"Like A Rock" Gala: April 14, 2018
Stay in touch to find out about other events!



CONNECT WITH US ON SOCIAL MEDIA

facebook.com/SourcesCommunityResourceCentres
twitter.com/SourcesBC
youtube.com/user/SourcesCommunity
instagram.com/SourcesBC
linkedin.com/company/Sources

DONATE



ONLINE

www.soucesfoundation.ca



IN PERSON

882 Maple St.
White Rock, BC V4B 4M2



BY PHONE

604 531 6226



BY MAIL

#208C - 1461 Johnston Rd.
White Rock, BC V4B 3Z4

To learn more, visit:
WWW.SOURCESFOUNDATION.CA



FOR YOU OR SOMEONE YOU CARE ABOUT
SEEK HELP | VOLUNTEER | DONATE



SOURCES
CORPORATE
OFFICE

#208C - 1461 Johnston Rd.
White Rock, B.C.
V4B 3Z4

T: 604 542 7594
E: info@sourcesbc.ca
www.sourcesbc.ca

